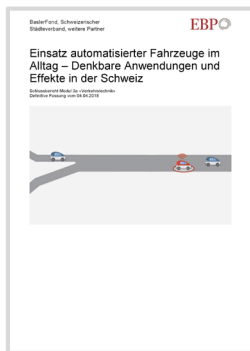


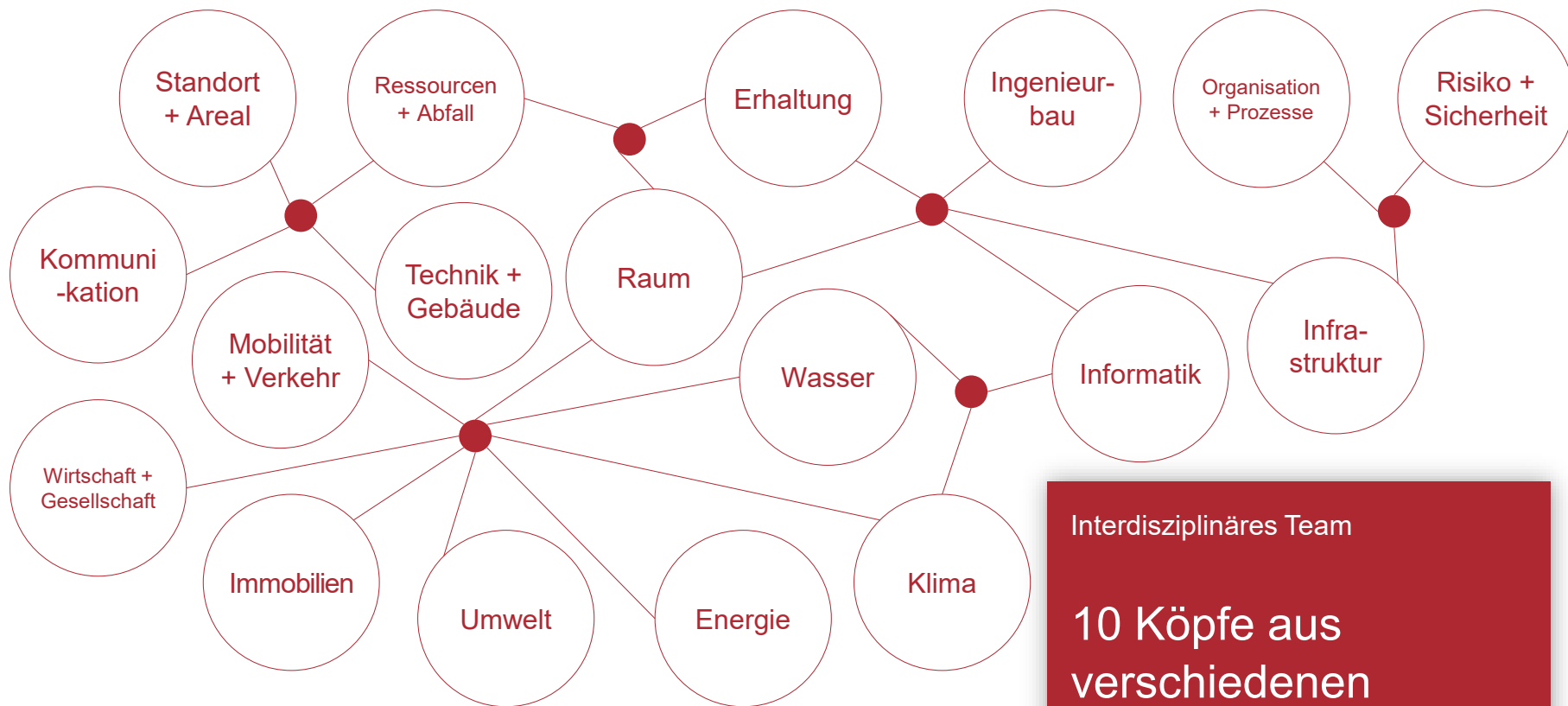
Automatisiertes Fahren: Wo bleibt der Mensch?

EBP Schweiz



Einblicke in unsere Arbeit

Bereits 12 erarbeitete und publizierte Studien zum Thema

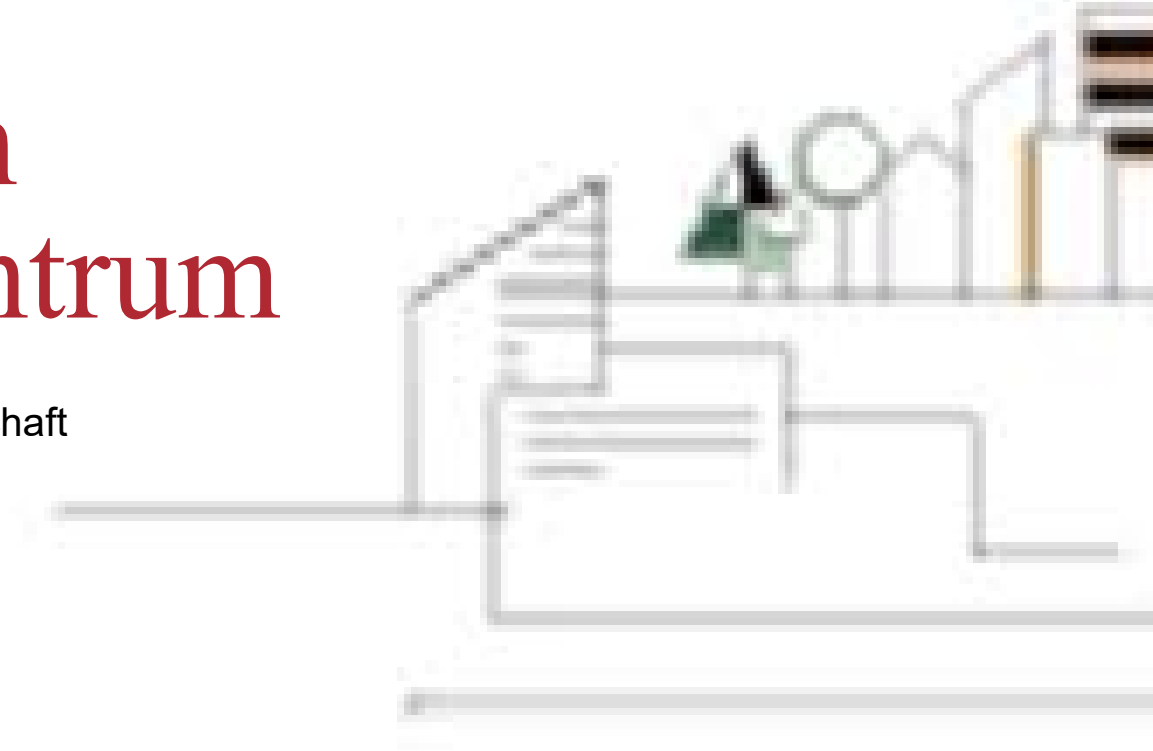


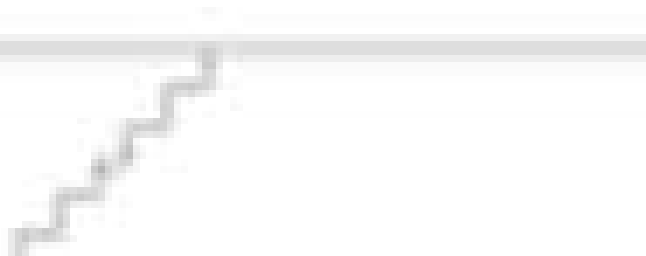
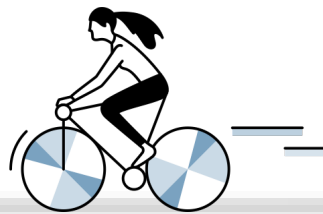
Interdisziplinäres Team

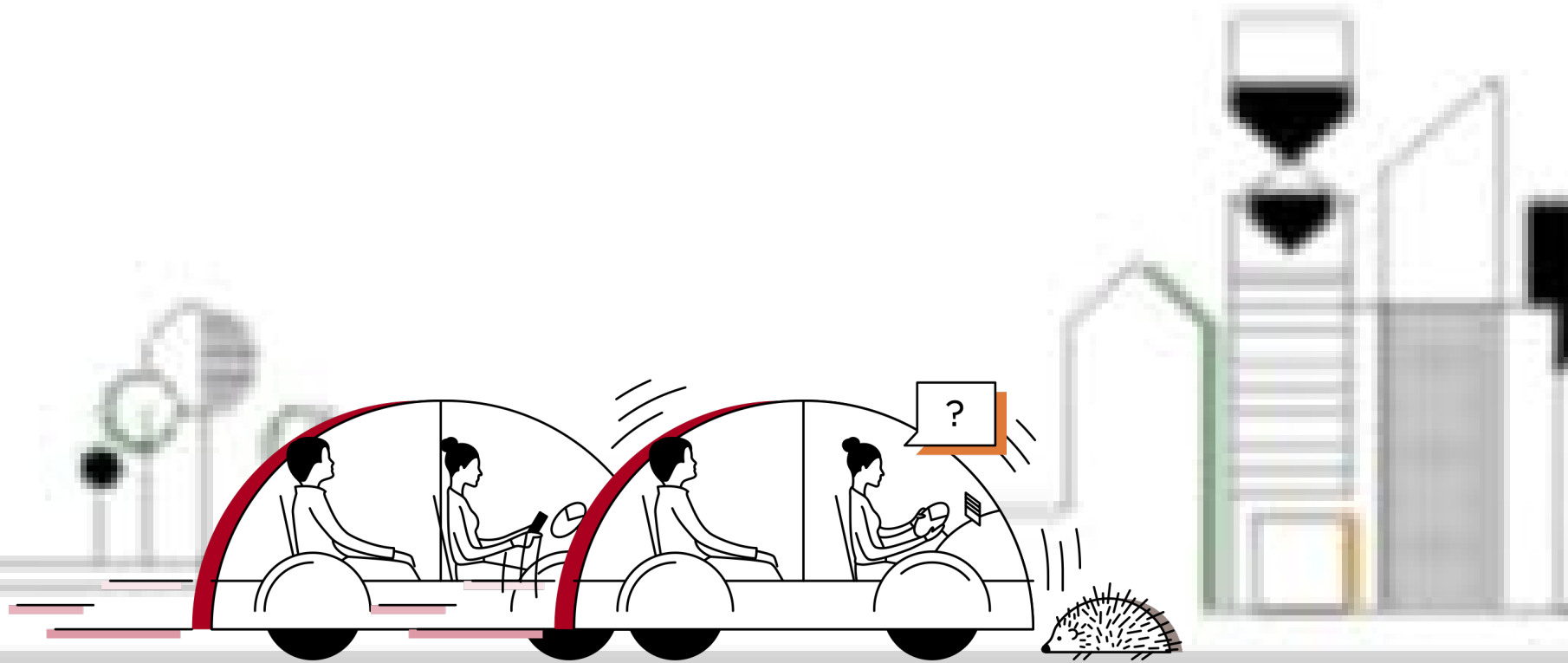
10 Köpfe aus
verschiedenen
Fachdisziplinen

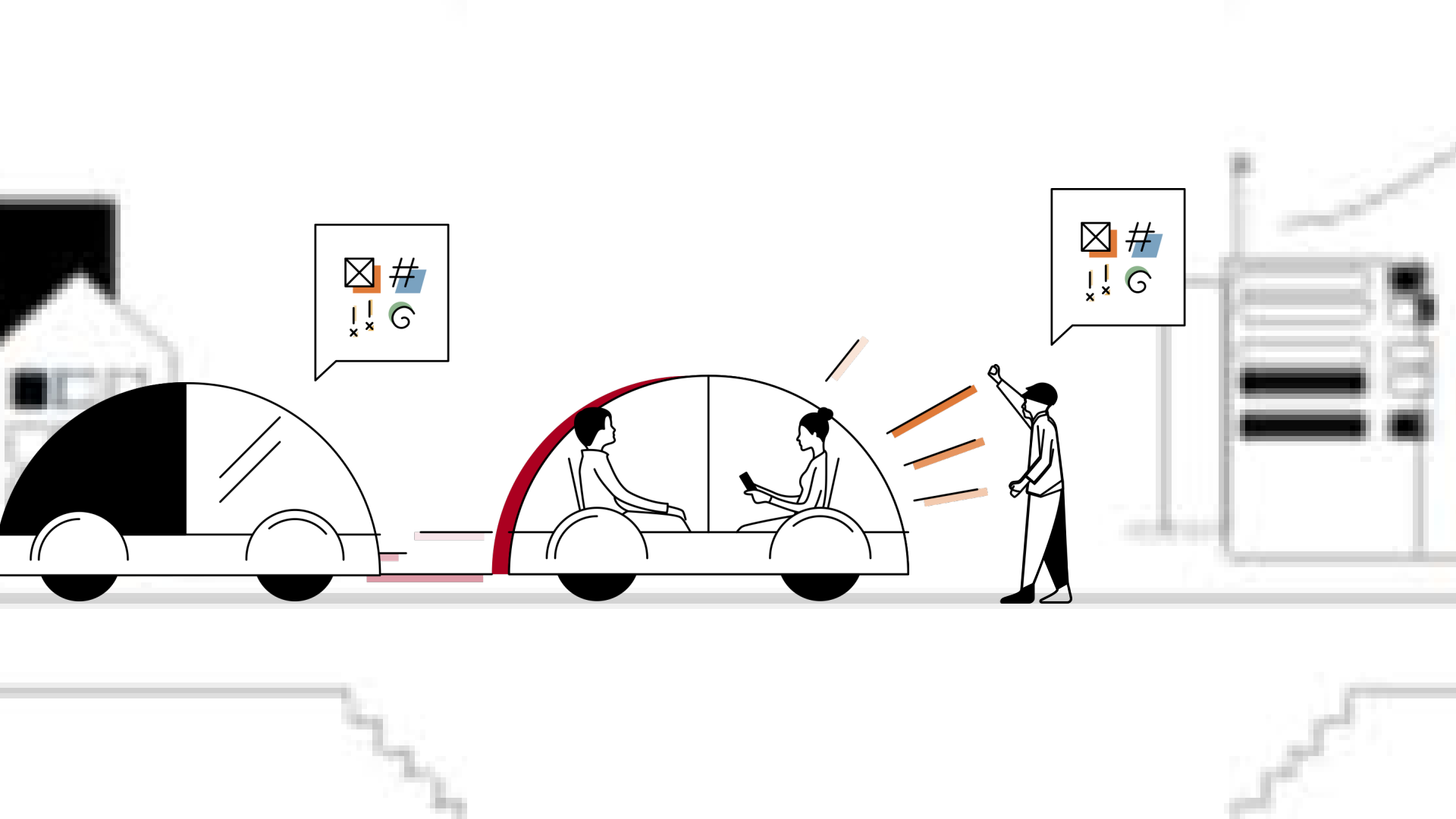
Der Mensch steht im Zentrum

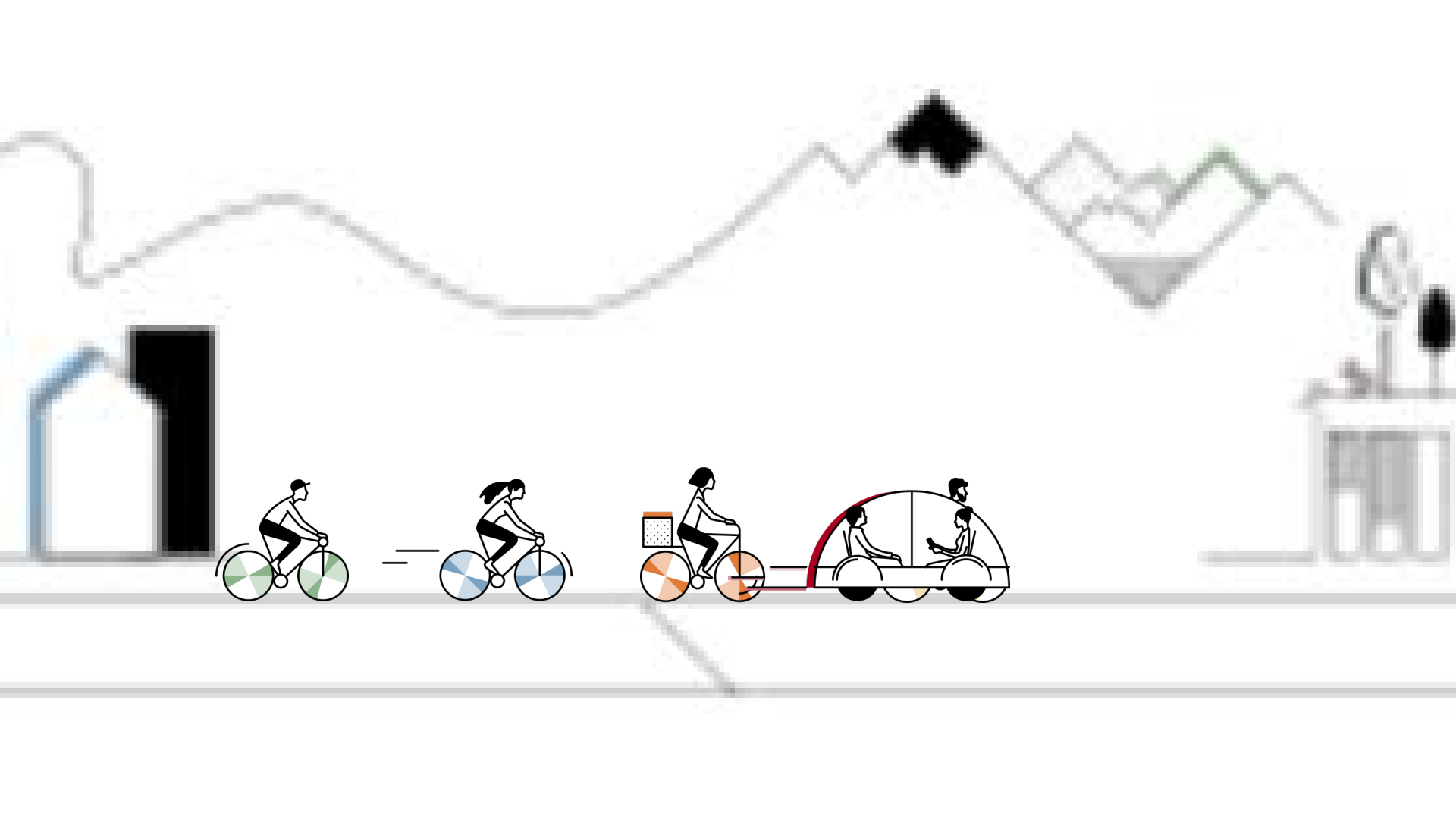
als Individuum und Teil der Gesellschaft

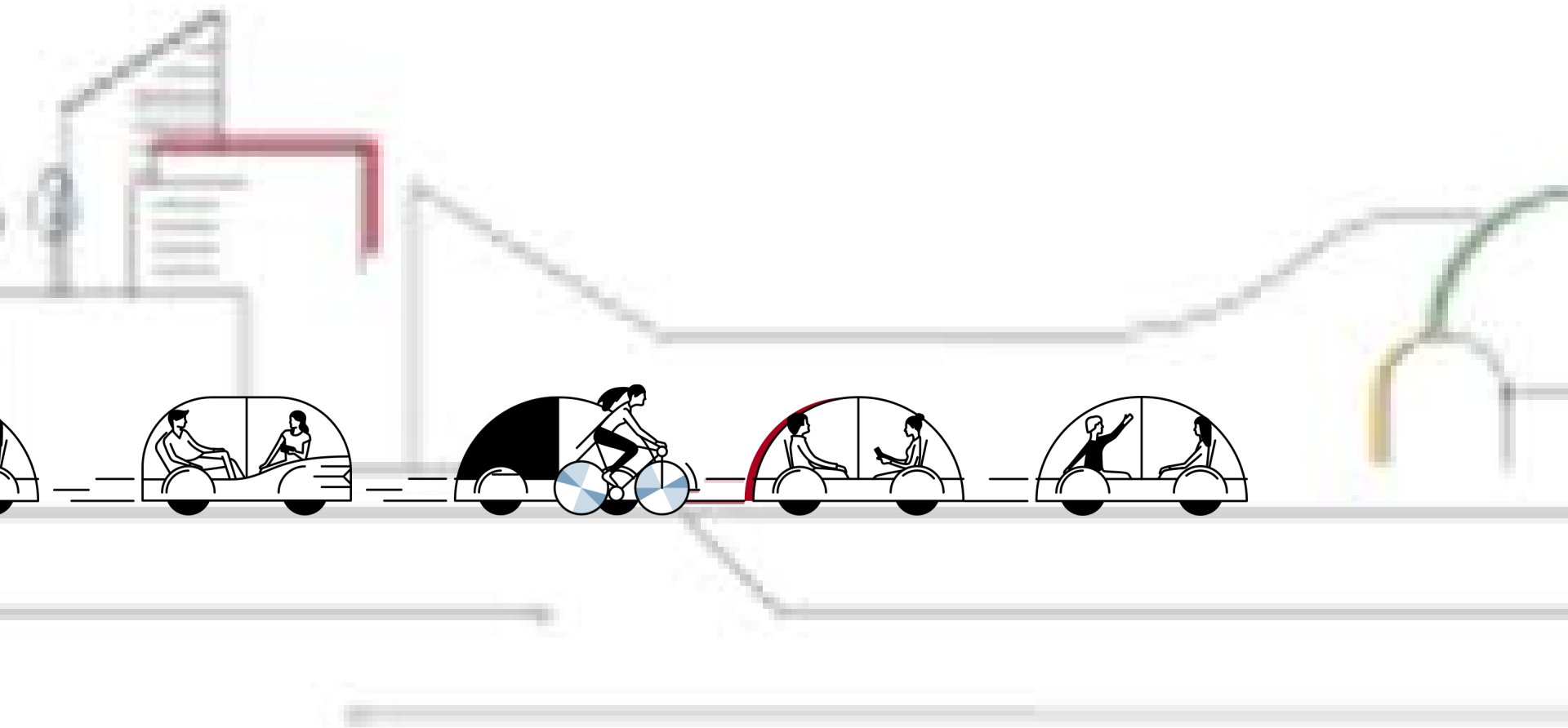


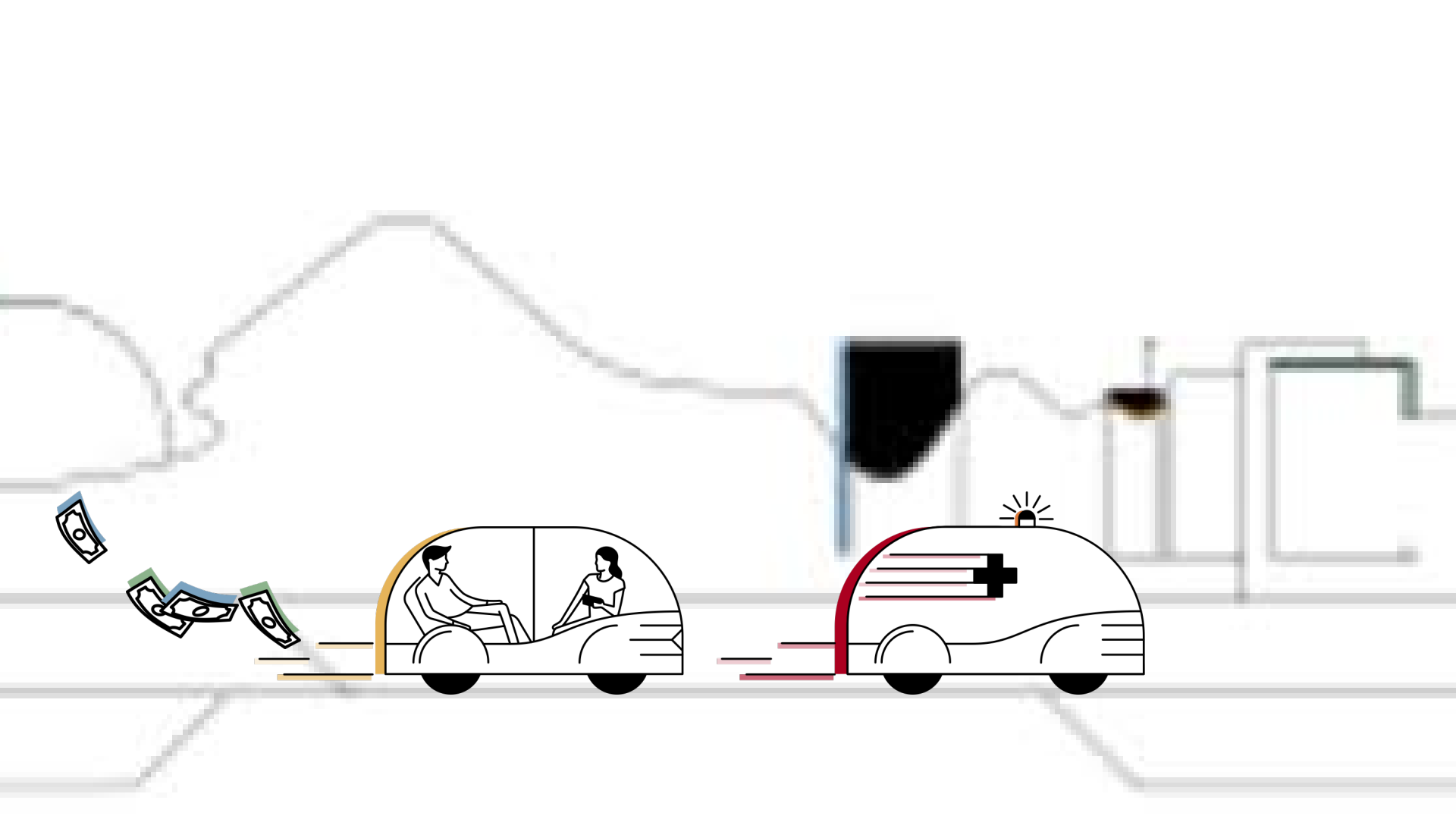


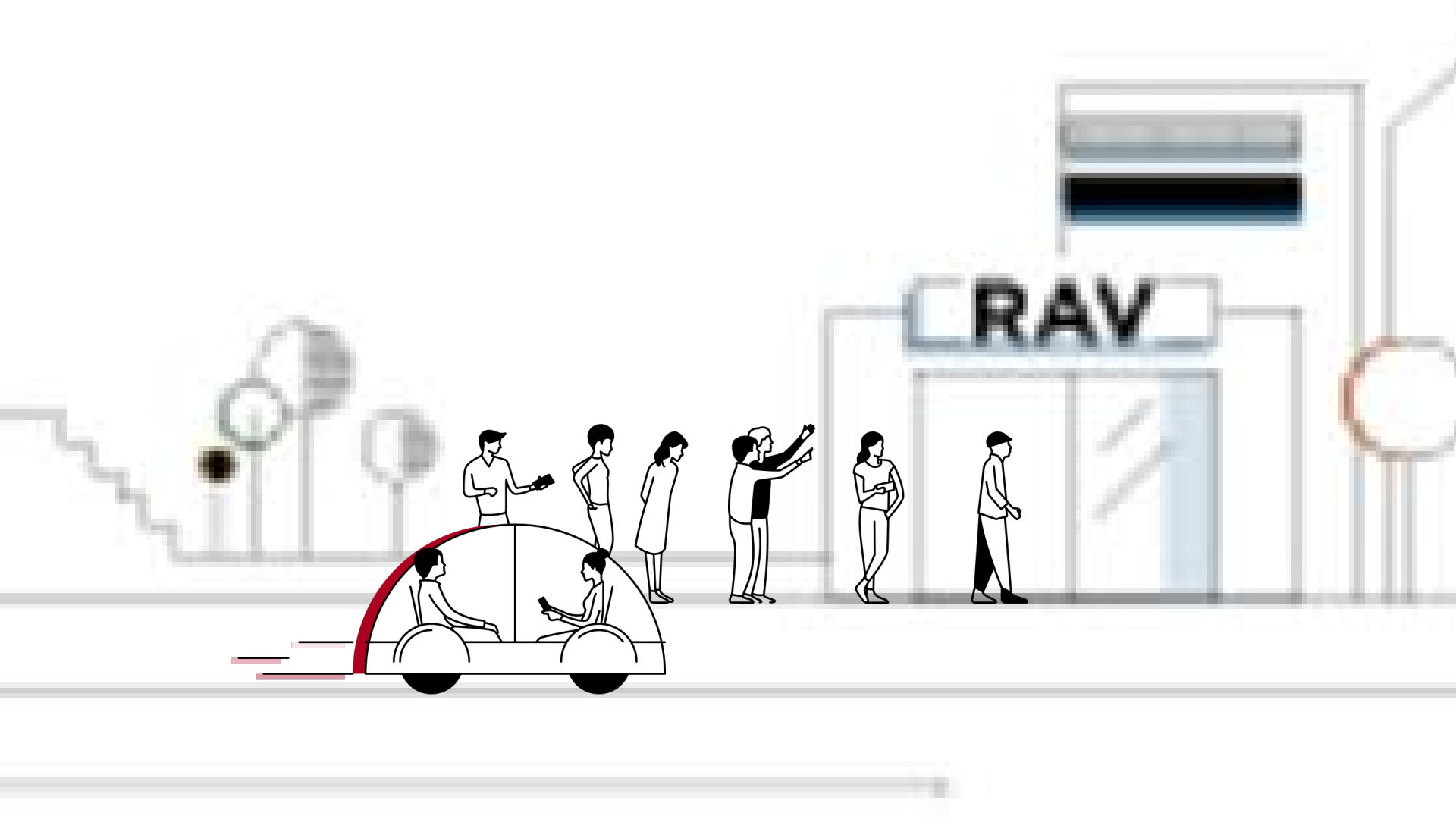


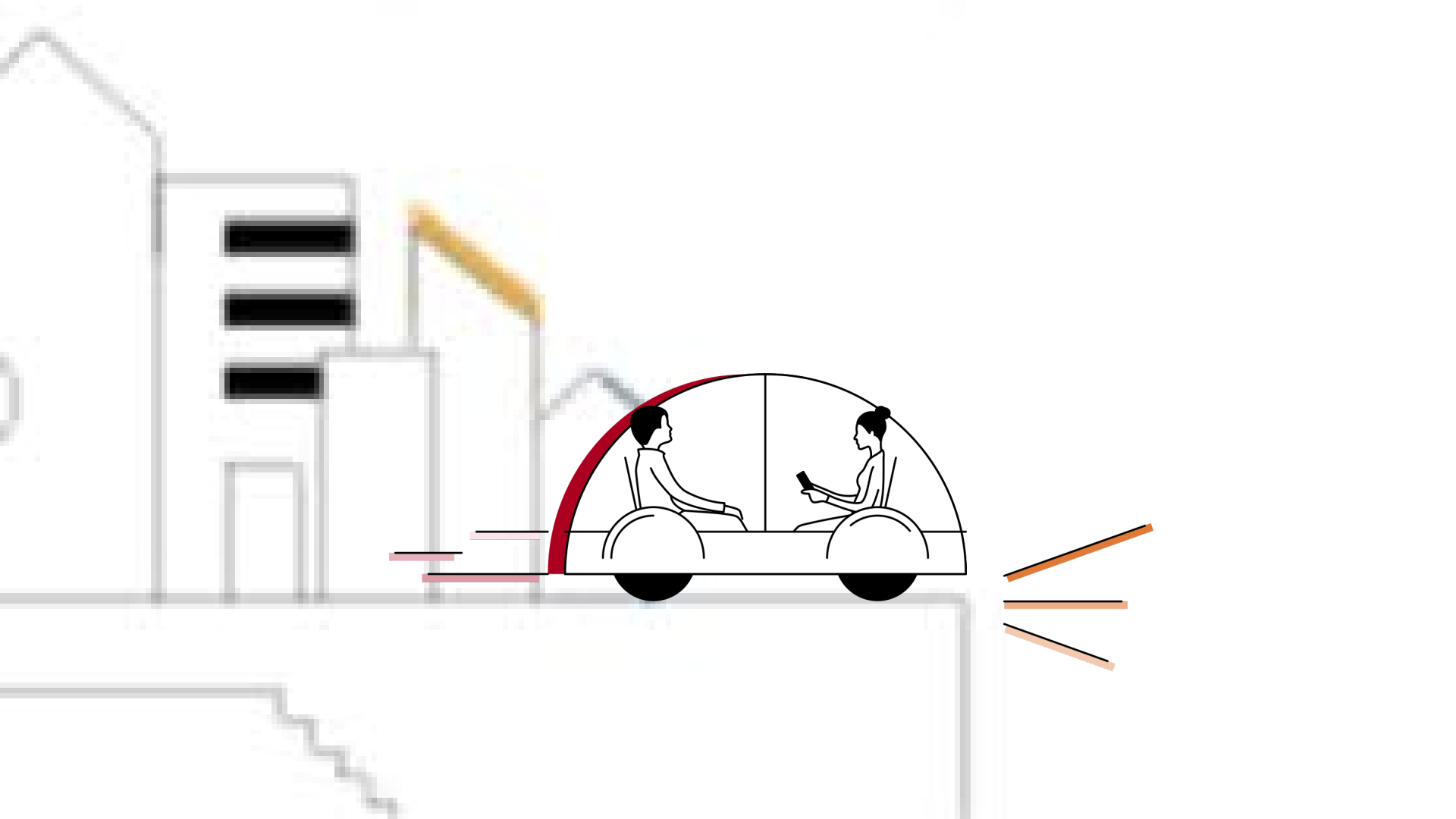












Aus- und
Weiterbildungen

RAV





Mobility Pricing

The illustration depicts a road with several vehicles. From left to right: a black and white car, a bus with passengers and a money icon, a car with two passengers and a money icon, and a white car with a red vertical bar on its side. A large red circle is positioned on the right side of the road, containing the text 'Mobility Pricing'. The background features a simple line drawing of a mountain and a building.



Integration

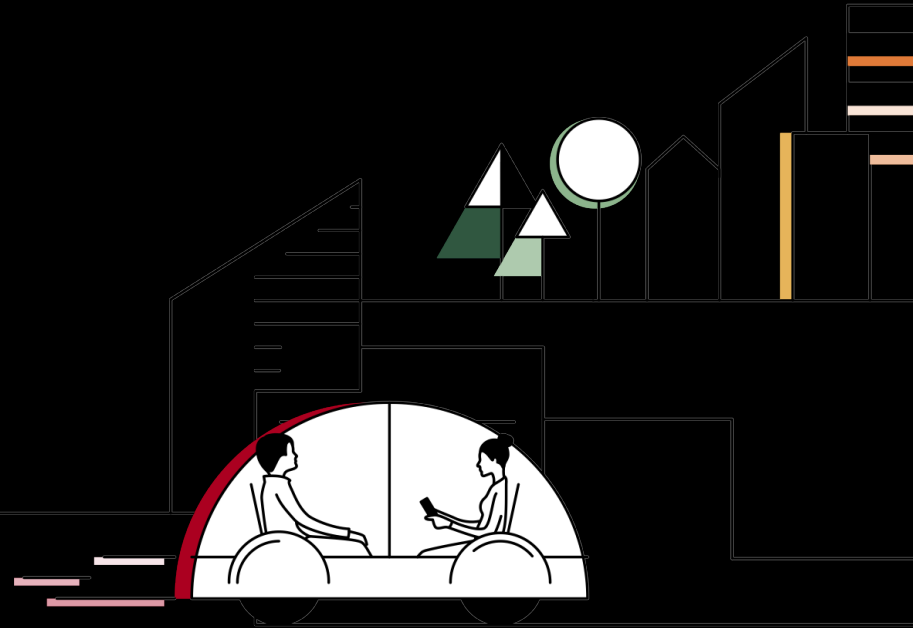
A stylized illustration depicting informal communication. On the left, a woman sits in a futuristic car, looking at a smartphone. To her right, a man stands pointing towards a large screen displaying social media icons (envelope, hash, exclamation marks, and a 'G' logo). The background includes a house, a server rack, and a staircase. A large red circle is overlaid on the scene, containing the text 'Informelle Kommunikation'.

Informelle Kommunikation



Sicherheitsgefühl

Lieber aktiv
mitgestalten, als
überfahren werden!



Vielen Dank!



Lilian Blaser

lilian.blaser@ebp.ch

044 395 12 05

EBP Schweiz AG
Zollikerstrasse 65
8702 Zollikon



Fabienne Perret

Fabienne.Perret@ebp.ch

044 395 16 16

EBP Schweiz AG
Mühlebachstrasse 11
8032 Zürich